

## Finding the sensory friendly space in the Library

Walk past the black gates under the Library sign.

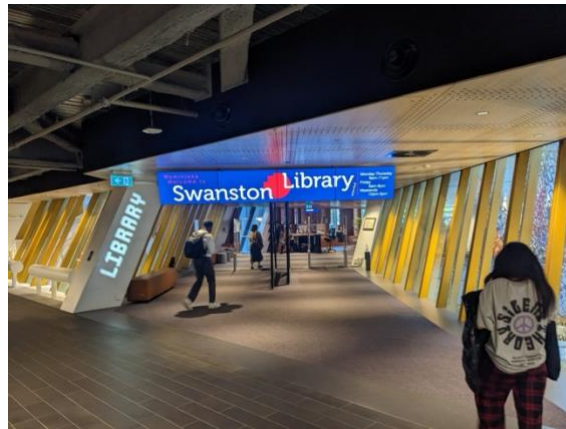


Figure 1. Library sign

Make a slight left and go down the narrow corridor. There is a **surface change** from carpet to tile to polished floor as you go through the corridor



Figure 2. Narrow corridor

When you reach the end of the corridor, the sensory friendly space is on the right. The **floor** at the end of the corridor is **bright orange**.

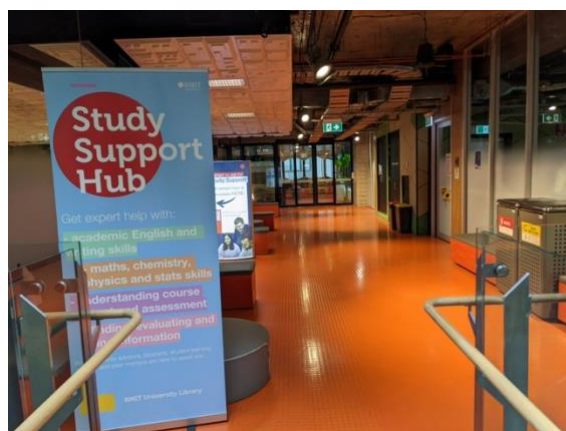


Figure 3. Space at the end of the corridor

The door to the sensory friendly space is marked with two sunflowers and is labelled 12.5.13. There are also a set of guidelines for use of the space.

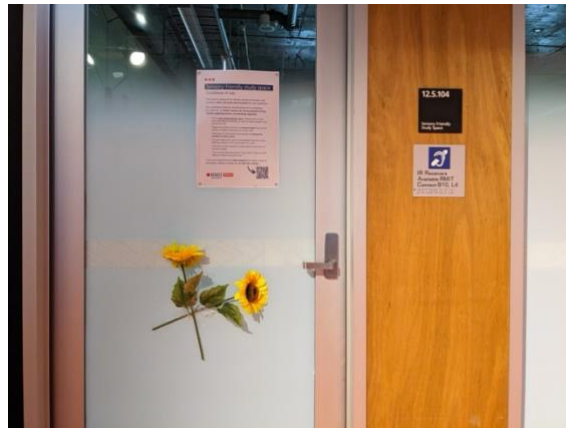


Figure 4. Door to the sensory friendly space

The space has **adjustable lighting**, **comfortable furniture**, some **plants**, and a glass wall letting in **natural light**. You may hear **noise from ventilation fans**.

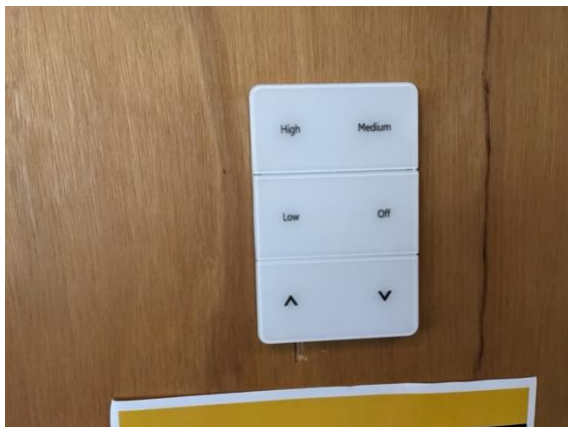


Figure 52. Light control

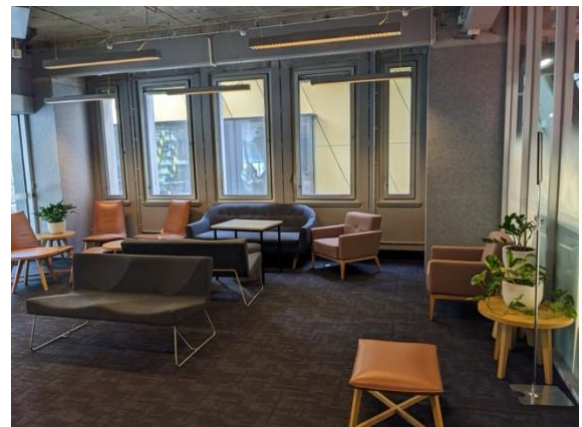


Figure 61. The sensory friendly space

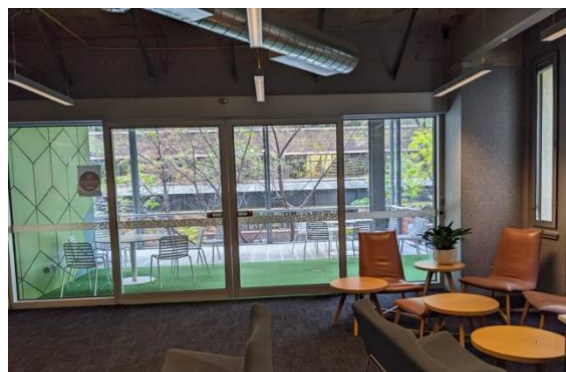


Figure 7. A glass wall on the sensory friendly space