

Navigating from Bowen Street to the Library

There may be some sessions at RMIT Swanston Street Library. The best way to get from Bowen Street to the Library is via Building 8. Keep in mind that during Open Day, these spaces will be very busy.

Go down Bowen Street about 100 metres and past the Wurrunggi Biik **sculpture**. Bowen street is a **flat, pedestrian** street, so you can use the paved segment of the street



Figure 1. Wurrunggi Biik sculpture on Bowen Street

You will see a set of both revolving doors and **sliding doors** to enter **Building 8**.



Figure 2. Building 8 entrance on Bowen Street

As you enter the building, you will see **'RMIT Connect'** on your left and the **Jobs Shop** on the right. The RMIT Connect area has strong lightning and this area will be busy during Open Day. Use the escalators right before RMIT Connect. The **escalators move quite fast**.

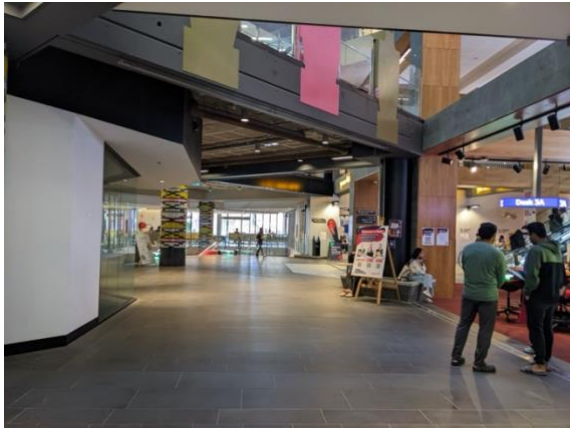


Figure 3. Inside Building 8



Figure 4. Escalators next to RMIT Connect

As you go up the escalators, and you will find the Library right in front of you.

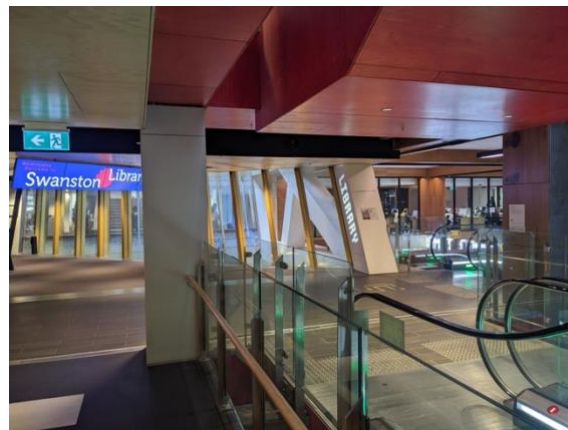


Figure 5. Library on level 5

For lift access

Continue **past the Job Shop** down the corridor with the **yellow neon signs** overhead. Go through a double set of automatic doors.

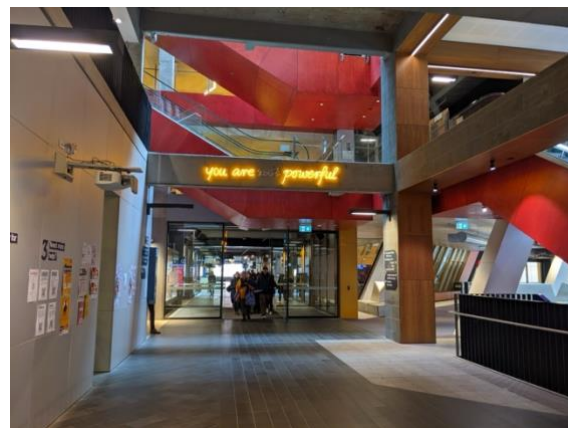


Figure 6. Corridor leading to a double set of automatic doors

As you exit the second set of doors, turn left. The lifts will be visible then. The corridor to reach the lifts is a bit **narrow** and has **furniture attached to the floor**.



Figure 7. Double set of doors



Figure 8. Lifts at the end of corridor

Go past the toilets and you will see lifts labelled **“Building 10”**. Go to level 5



Figure 9. Lift on Building 10

As you exit the lift, you will see a **brightly lit** space with **red, yellow and orange furniture**. The **floor** has a **black and white pattern**. Head to the right and then toward the end of the corridor. You will see the Library.

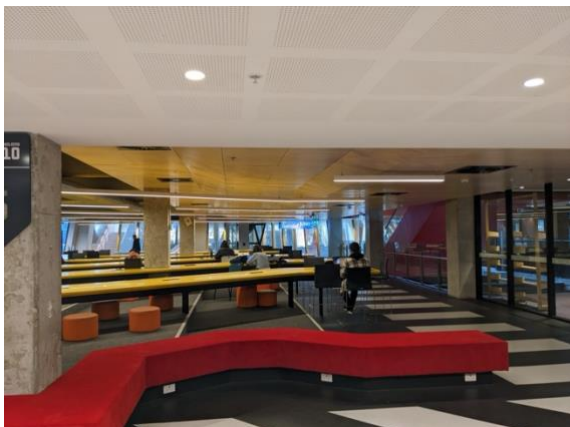


Figure 10. Lift exit - Level 5

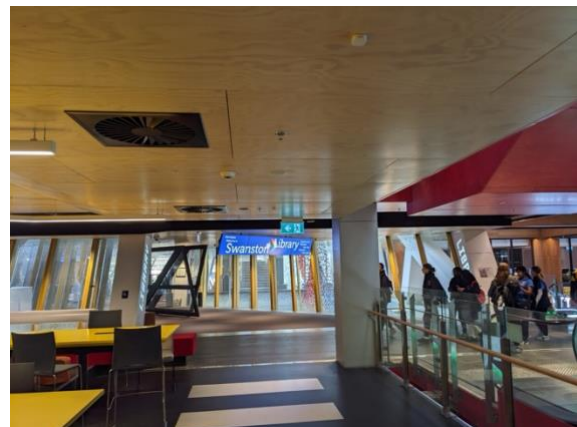


Figure 11. Library entrance